



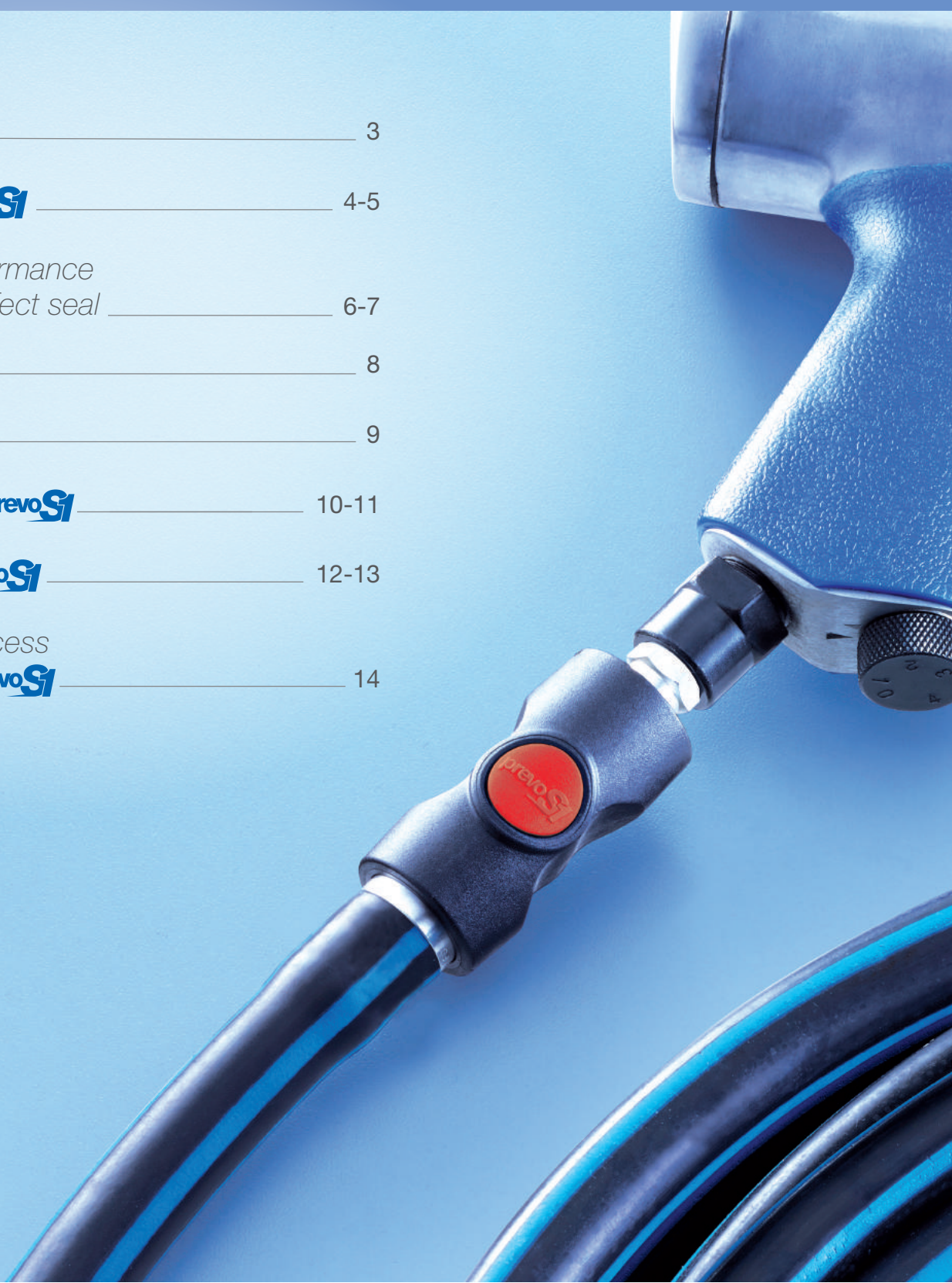
CONNECTED TO INNOVATION



**prevoS1** RANGE

# Contents

<i>History</i> _____	3
<i>Innovation</i> <b>prevoS1</b> _____	4-5
<i>Unrivalled performance thanks to a perfect seal</i> _____	6-7
<i>Profiles</i> _____	8
<i>Range</i> <b>prevoS1</b> _____	9
<i>Polymer body</i> <b>prevoS1</b> _____	10-11
<i>Metal body</i> <b>prevoS1</b> _____	12-13
<i>Self-service access to couplings</i> <b>prevoS1</b> _____	14





## *Technology at the heart of innovation*

- ➔ **1978:** PREVOST designs the first metal coupling with a square button.
- ➔ **1985:** PREVOST develops a new locking technique and the button becomes round.
- ➔ **1990:** PREVOST creates a composite body. The coupling becomes lightweight and non-scratch.
- ➔ **1993:** PREVOST revolutionizes the compressed air industry with the launch of its “anti-hose whip” safety feature.
- ➔ **2008:** PREVOST invents the **prevoS1** coupling. With just one touch of a button, the coupling is immediately decompressed and disconnected in complete safety.



INNOVATION

**WORLDWIDE EXCLUSIVITY  
PATENTED AND PROTECTED**

**PrevoS1** couplings combine technological performance with value to meet the highest expectations for customers.

The **prevoS1** range is synonymous with the excellent quality, service life, innovation, safety and maximum efficiency of its pneumatic systems and tools.

With a three-year warranty and innovative technology the **prevoS1** coupling is unrivaled in the industry.



## Simple and easy to use

➔ **Quick and effortless coupling:**  
easy to connect, with no risk of damaging the internal mechanism.

➔ **Decompression and disconnection**



**of your pneumatic systems and tools in a single step:**

easy to use, enabling tools to be changed quickly on assembly lines.

➔ **Swivel body allows for quick assembly and prime positioning:**

cost savings as a result of improved productivity and labor requirements for installation.

## Certified safety

➔ **Automated control over decompression and disconnection in complete safety:** no risk of hose whip or accidental disconnection eliminating hazards for operators, products or tools in the surrounding area. **ISO 4414.**



➔ **Silicone-free manufacture:**  
avoid surface imperfections from compressed air contamination during paint or varnish applications.

➔ **Anti-static construction:**  
eradicates problematic external dust that is attracted through static electricity to painted or varnished surfaces.

➔ **ATEX 2 certification:**

attests to the safety of the **prevoS1** couplings use in many environments (gaseous, explosive, paint booths, etc.). Equipment complies with requirements for zones classified: 2 gas and 22 dust.



## Durability

- ➔ **Resistant to abrasion, vibrations, corrosion, impacts and crushing:** reinforced composite body capable of withstanding the harsh conditions frequently found in production environments.



## Ergonomically designed for increased comfort

- ➔ **Ergonomically shaped**  
to ensure a natural grip and ease of handling
- ➔ **Non-slip composite surface**  
to ensure a firm grip on the coupling.
- ➔ **Compact and lightweight coupling**  
for ultimate comfort during repetitive activity. Ensures accuracy for increased work output and efficiency.

## International compatibility

- ➔ **With all standard and non-standard profiles** (Industrial, ISO 6150 C and High flow interchange). The **prevoS1** range meets the requirements of nearly all international standards.
- ➔ **Color coded buttons mean that international profiles can be identified quickly and easily:** less risk of connection errors that may result in damage or cause accidents.

# Unrivalled performance thanks to a perfect seal

The **prevoS1** seal mechanism, in conjunction with a PREVOST plug, ensures that all risk of leaks is eliminated in both the coupled and uncoupled positions.


Seals are located on two areas:

➔ **O-ring on the plug side:**

this ensures a perfect peripheral seal around the plug when connected.

➔ **Valve seal:**

this aerodynamic valve guarantees the flow rate is optimized, without resulting in pressure loss - which creates a higher power tool and improved efficiency.

- 
- Leaks account for more than 20% of the production of compressed air in workshops, and are the source of significant financial losses in terms of energy consumption.
  - In a network, leaks occur most commonly at the coupling-plug connection (poor quality of design and the seal between components).
  - Increasing the pressure provided by a compressor by 14.5psi/1 bar results in a 6% to 7% increase in power consumption.

**Opt for the prevoS1 coupling range:  
it's quick, safe and guaranteed leak-free!**

If the connection is poor and leaking, it is most likely due to a faulty or imperfect plug. To achieve the best connection, you must have a top quality coupling and plug.

	Conventional plug	PREVOST plug
Materials	Brass plugs are unable to withstand long term vibrations and their surface can deteriorates quickly resulting in a disconnection. The plug can cause premature damage to the seal and create a leak.	PREVOST plugs are made of nitrided steel and are scratch and corrosion resistant.
Standards	An imperfect plug that does not meet standard dimensions and tolerances will not form a perfect connection with the coupling.	PREVOST plugs comply with all requirements to meet ISO standards.
Tolerance	Many plugs do not correspond to the standardized tolerances expected of a top-quality coupling. The plug and coupling deteriorate, resulting in a poor connection.	PREVOST plugs comply with the exact dimensions and tolerances prescribed by the prevailing standards.

It is essential to ensure that the quality of the plug is equal to that of the coupling in order to obtain a leak free and reliable connection. Choosing good quality hardware ensures savings in terms of energy costs and guarantees the reliability of the network. When making a purchase, it is important to consider not only the purchase price, but also the total costs.



## Cost advantages

Thanks to the durability and reliability of the **prevoS1** coupling, it is possible to:

- ➔ **prevent any significant pressure loss as air passes through the coupling**
- ➔ **cut energy costs**
- ➔ **use an optimum air flow, ensuring maximum efficiency of pneumatic tools and systems**
- ➔ **achieve productivity gains:**  
with higher efficiency and a longer, maintenance free service life.

# Body Profiles

➔ Available in different international profiles



## ➔ Connection Type

### Female cylindrical thread

- BSPP
- International standard ISO 228/1



### Female tapered thread NPT

- American thread standard
- ANSI/ASME B 1.20.1 (North-American market)

### Male cylindrical thread

- BSPP
- Built-in gasket
- International standard ISO 228/1



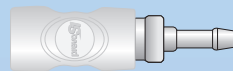
### Male tapered thread

- NPT et BSPT
- American thread standard
- ANSI/ASME B 1.20.1 (North-American market)



### Hose coupling

- Assembly with screw clamp or lug clamp

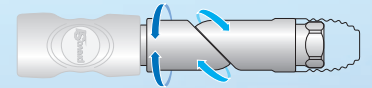


### Bulkhead penetration



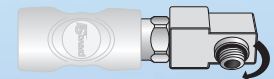
### Tapped swivel coupling

- 360° rotation in two axis
- Scratch protection

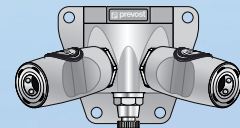


### Male thread swivel coupler

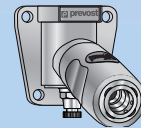
- Built-in gasket
- 360° in one axis



### Wall-mounted fitting



### Single wall fitting



## Identification of couplings

- ➔ Color coded international profiles
- ➔ Logical part numbering system
- ➔ Thread type engraved on product

Part number example:

# USI 061202SW

U	S	I	06	1	2	02	SW	
A: Aro B: British C: ISO C E: European I: ISO B U: Truflate	<b>S: Safety</b> R: Regular	<b>I: PrevoS1</b> P: Adaptator	<b>06: Ø 1/4"</b> 07: Ø 3/8" 08: Ø 5/16" 11: Ø 1/2"	<b>1: Coupling</b> 2: Penetration 6: Adaptator 8: Y	1: BSP <b>2: NPT</b> 8: Hose tail	01: 1/4 female <b>02: 3/8 female</b> 03: 1/2 female 04: 3/4 female 51: 1/4 male 52: 3/8 male 53: 1/2 male 54: 3/4 male	06 : 1/4" hose Ø 08 : 5/16" hose Ø 10 : 3/8" hose Ø 13 : 1/2" hose Ø 16 : 5/8" hose Ø 19 : 3/4" hose Ø	Optional <b>SW: swivel fitting</b> WF: wall fastener SE: swivel coupler HE: stainless steel version



PROFILES		PART NUMBERS	SAFETY QUICK COUPLINGS	ID PASSAGE	THREAD	FLOW RATES at 0.6 bar for $\Delta P$ 0,6 bar	FLOW RATES at 100 psi for $\Delta p = 10$ psi
INDUSTRIAL INTERCHANGE 1/4"		ISI 06		1/4"	BSP/NPT	833 l/min	34 Scfm
INDUSTRIAL INTERCHANGE 3/8"		ISI 08		3/8"	BSP/NPT	2028 l/min	81 Scfm
INDUSTRIAL INTERCHANGE 1/2"		ISI 11		1/2"	BSP/NPT	3686 l/min	148 Scfm
AUTOMOTIVE/TRUFLATE INTERCHANGE 1/4"		USI 06		1/4"	BSP/NPT	833 l/min	34 Scfm
AUTOMOTIVE/TRUFLATE INTERCHANGE 3/8"		USI 08		3/8"	BSP/NPT	2028 l/min	81 Scfm
AUTOMOTIVE/TRUFLATE INTERCHANGE 1/2"		USI 11		1/2"	BSP/NPT	2987 l/min	120 Scfm
HIGH FLOW INTERCHANGE 3/8"		ESI 07		3/8"	BSP/NPT	1820 l/min	73 Scfm
HIGH FLOW INTERCHANGE 3/8"		ESI 07HE		3/8"	BSP	1820 l/min	82 Scfm
HIGH FLOW INTERCHANGE 1/2"		ESI 11CB		1/2"	BSP/NPT	2040 l/min	73 Scfm
HIGH FLOW INTERCHANGE 1/2"		ESI 11		1/2"	BSP/NPT	3530 l/min	142 Scfm
ARO 210 INTERCHANGE 1/4"		ASI 06		1/4"	BSP/NPT	800 l/min	32 Scfm
ISO 6150 C INTERCHANGE 1/4"		CSI 06		1/4"	BSP/NPT	833 l/min	34 Scfm
ISO 6150 C INTERCHANGE 3/8"		CSI 08		3/8"	BSP/NPT	2028 l/min	81 Scfm
BRITISH INTERCHANGE 1/4"		BSI 06		1/4"	BSP	750 l/min	29 Scfm

# Polymer body **prevoS1**



## Construction

- ➔ **Body:**  
composite polymer material
- ➔ **Other components:**  
steel with RoHS\* compliant anti-corrosion treatment, or aluminium
- ➔ **Seal:**  
NBR O-ring for thread seal

## Pressure and temperatures

- ➔ **Service pressure range:**  
30 to 175 psi  
(not suitable for vacuum)
- ➔ **Temperature:**  
5°F to 155°F

## Construction standards

- ➔ **prevoS1 couplings comply with:**
  - the European Pressure Equipment Directive (PED) 2014/68/EU
  - the safety requirements of the ISO 4414 standard
  - the European RoHS\* directive 2011/65/EU
  - ATEX 2

\* Directive RoHS 2011/65/EU on the restriction of the use of certain hazardous substances in electrical and electronic equipment (lead, mercury, cadmium, hexavalent chromium, polybrominated biphenyls (PBB) or polybrominated diphenyl ethers (PBDE)).

## Advantages exclusive to the **prevoS1** composite body

### → Ultra-lightweight:

2.6 oz for couplings with 1/4" body size (hose outlet)  
4 oz for couplings with 3/8" body size (hose outlet)

### → Non-scratch:

No damage to vulnerable surfaces

### → Anti-static:

Conducts electricity to avoid static electricity complications (ex. dust attracted to the paint/polish/electronic work surface). - ATEX2

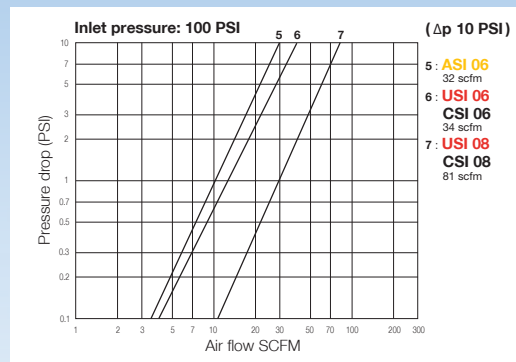
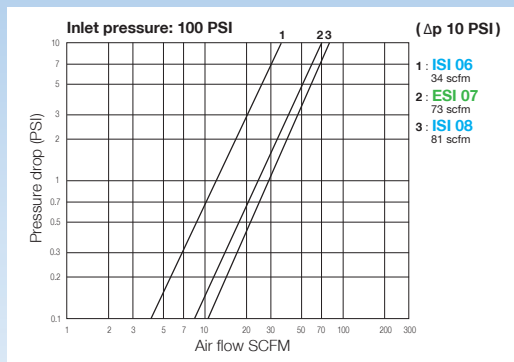
### → Applications:

- All connections with or without safety mechanism
- Assembly lines (automotive, household appliances, etc.)
- Mechanical manufacturing, machine workshops
- Paper and printing industries
- Automotive repairs
- Textile industries
- Wood and plastics industries
- Any work involving vulnerable environments or products
- Technical education

## Flow rate at 100 psi ( P = 10 psi)

PROFILES	Industrial 1/4" body size	ISO C 1/4" body size	ARO 1/4" body size	Automotive/ Truflate 1/4" body size	High Flow 3/8" body size	Industrial 3/8" body size	ISO C 3/8" body size	Automotive/ Truflate 3/8" body size
PREVOST part numbers	ISI 06	CSI 06	ASI 06	USI 06	ESI 07	ISI 08	CSI 08	USI 08
<b>Flow rates (Scfm)</b>	<b>34</b>	<b>34</b>	<b>32</b>	<b>34</b>	<b>73</b>	<b>81</b>	<b>81</b>	<b>81</b>
PREVOST part numbers Compatible plug	IRP 06	CRP 06	ARP 06	URP 06	ERP 07	IRP 08	CRP 08	URP 08

## Pneumatic flow rate/pressure loss curves





### Construction

- ➔ **Body:**  
17% chromium stainless steel
- ➔ **Other components:**  
steel with RoHS\* compliant anti-corrosion treatment, or aluminium
- ➔ **Seal:**  
NBR O-ring for thread seal
- ➔ **Push button:**  
composite material

### Pressure and temperatures

- ➔ **Service pressure range:**  
30 to 230 psi  
(not suitable for vacuum)
- ➔ **Temperature:**  
5°F to 155°F

### Construction standards

- ➔ **prevoS1 couplings comply with:**
  - the European Pressure Equipment Directive (PED) 2014/65/EU
  - the safety requirements of ISO 4414 standard
  - the European RoHS\* directive 2011/65/EU

\* Directive RoHS 2011/65/EU on the restriction of the use of certain hazardous substances in electrical and electronic equipment (lead, mercury, cadmium, hexavalent chromium, polybrominated biphenyls (PBB) or polybrominated diphenyl ethers (PBDE)).

## Advantages exclusive to the metal **prevoS1** with 1/2" body size

### ➔ Greater air flow

enables users to work with even the largest pneumatic tools at full capacity

### ➔ Highly resistant couplings

are suited to the most challenging environments.  
Ex. violent impacts, crushing, dirt and moisture, etc.

### ➔ Recommended in all industries with high safety and quality standards,

such as public works, ship building, heavy machinery maintenance, mining, off shore drilling, etc.

### ➔ Extremely flexible and easy to connect

the plug to the coupling thanks to the innovative design of the internal mechanism

### ➔ Easy and safe handling

even when wearing gloves

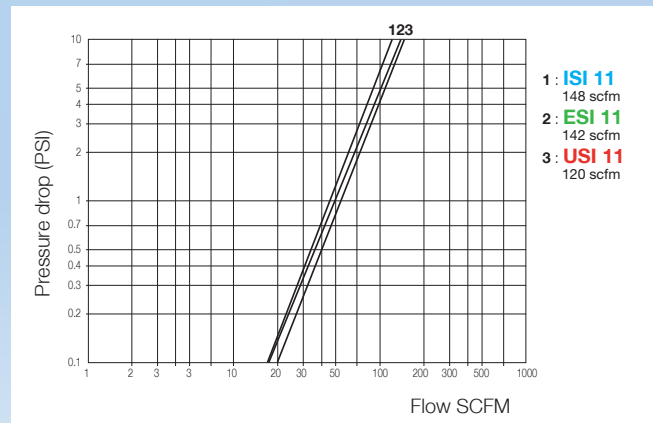
### ➔ Applications:

- Heavy duty
- Maintenance of industrial vehicles, agriculture, public works, mines and quarries, etc.
- Heavy industry and manufacturing, iron and steel production, foundries, cement works, etc.

## Flow rate at 100 psi ( P = 10 psi)

PROFILES	Industrial 1/2" body size	High Flow 1/2" body size	Automotive/ Truflate 1/2" body size
PREVOST part numbers	ISI 11	ESI 11	USI 11
<b>Flow rates (Scfm)</b>	<b>148</b>	<b>142</b>	<b>120</b>
PREVOST part numbers Compatible plug	IRP 11	ERP 11	URP 11

## Pneumatic flow rate/ pressure loss curves



# Self-service access to **prevoS1** couplings

*Individually packaged couplings,  
an ideal format for self-service access*

## Features of packaging

- ➔ **Perforated black plastic board**
- ➔ **Label summarizing the main features of the product**
- ➔ **Coupling firmly attached to the board using Colson ties**
- ➔ **Barcode on rear side of board**



## An ideal way to improve sales

- ➔ **Easy to set up on your sales floor**  
(couplings are delivered already attached to the boards)
- ➔ **Robust display stand**
- ➔ **Size of the boards** calculated to make optimum use of the space available
- ➔ **Attractive displays** enable easy handling and access to the products.
- ➔ **Couplings firmly fastened to the boards**, ensuring that packaging remains intact despite handling by customers with self-service access.
- ➔ **Optimum visibility** and presentation of products as the display is clear and simple.

**prevoS1** couplings with individual packaging are available in a number of international profiles: Industrial, ISO 6150C, High Flow, British and Automotive/Truflate.





PREVOST CORP  
PO BOX 29606  
1200 Woodruff RD Unit A-2  
GREENVILLE, SC 29607  
Phone: (800) 845-7220 – Fax: (864) 284-6428  
E-mail: sales.corp@prevostusa.com – www.prevostusa.com



Graphic design: www.triptik.fr - Photo credit: Sémaphore

Authorized distributor

S1 DOC14US\_01.19

This document is non-contractual.  
PREVOST reserves the right to modify the  
features of its range without prior notice.  
Publication Prevost - 2014-04